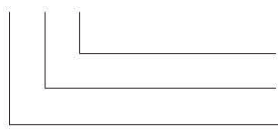


Model Instruction

AHI 2 - 4



Number of pump stages

Rated flow rate (m³/h)

New stainless steel horizontal multistage centrifugal pump

Overview Of The Product

AHI series new light stainless steel horizontal multistage centrifugal pump is a multi-purpose non-self-priming horizontal multistage centrifugal pump. This series of products has the characteristics of high efficiency, low noise and stable operation. The whole is compact, easy to install, easy to use and maintain. The overflow part is made of high-quality 304 stainless steel stamping and welding.

Application Limits

- ⊙ Thin, clean, non-combustible, and non-explosive liquid containing no solid particle or fiber
- ⊙ Applicable to deliver tap water, alkaline mineral water, softened water or mildly-corrosive medium
- ⊙ The use of a large-power motor must be considered when the density or viscosity of the medium delivered is higher than that of water.
- ⊙ Medium temperature: 0°C ~ +68°C for normal temperature type; 68°C ~ +120°C for hot water type
- ⊙ Ambient temperature: -15°C ~ +40°C ; maximum operating pressure: 1.0MPa

Applications Fields

- ⊙ Air conditioning system
- ⊙ Filling machinery
- ⊙ Environmental engineering
- ⊙ Water supply and pressurization system
- ⊙ Fertilization and metering system
- ⊙ Cooling system
- ⊙ Industrial cleaning
- ⊙ Aquaculture
- ⊙ Water treatment system application
- ⊙ Supporting use of chiller

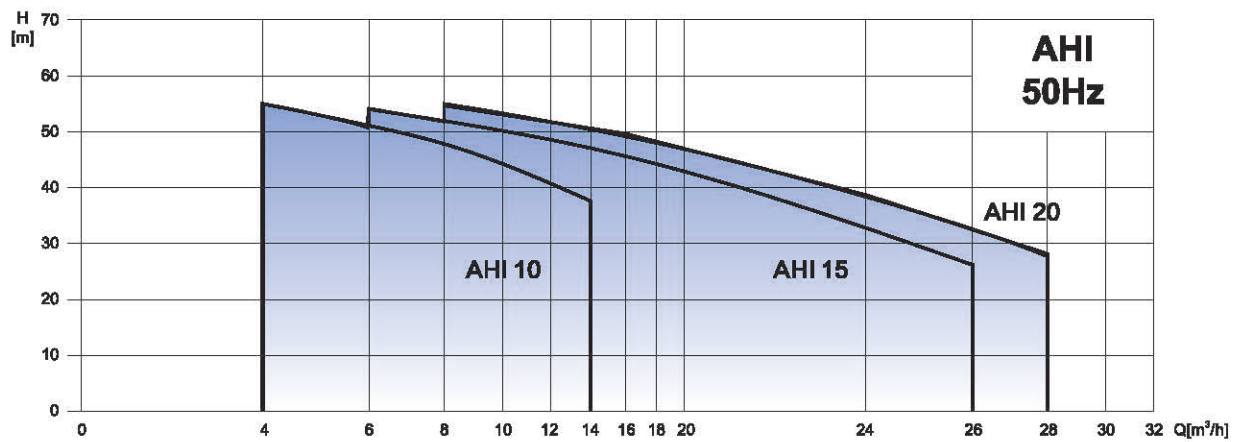
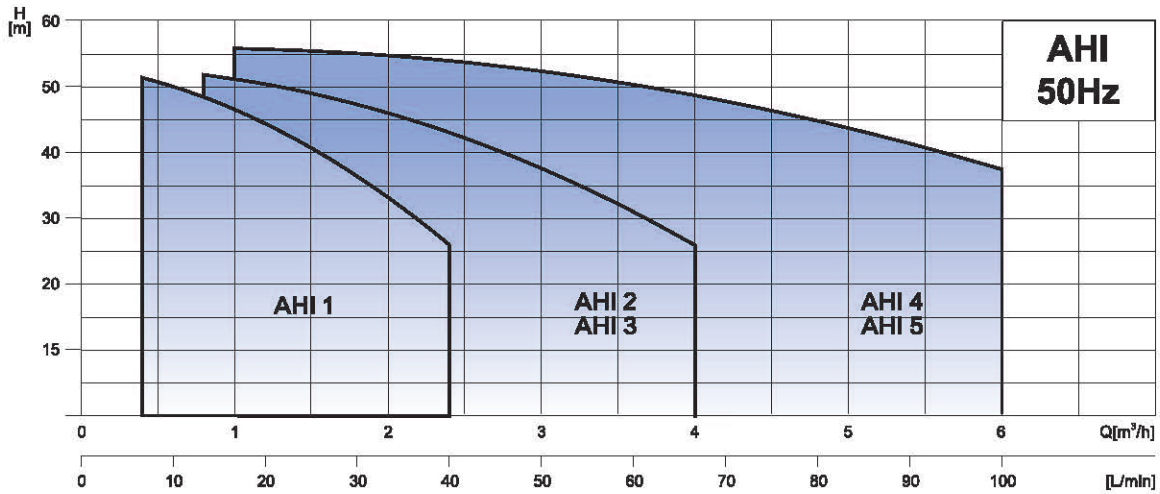
Certificate



Optional Available On Request

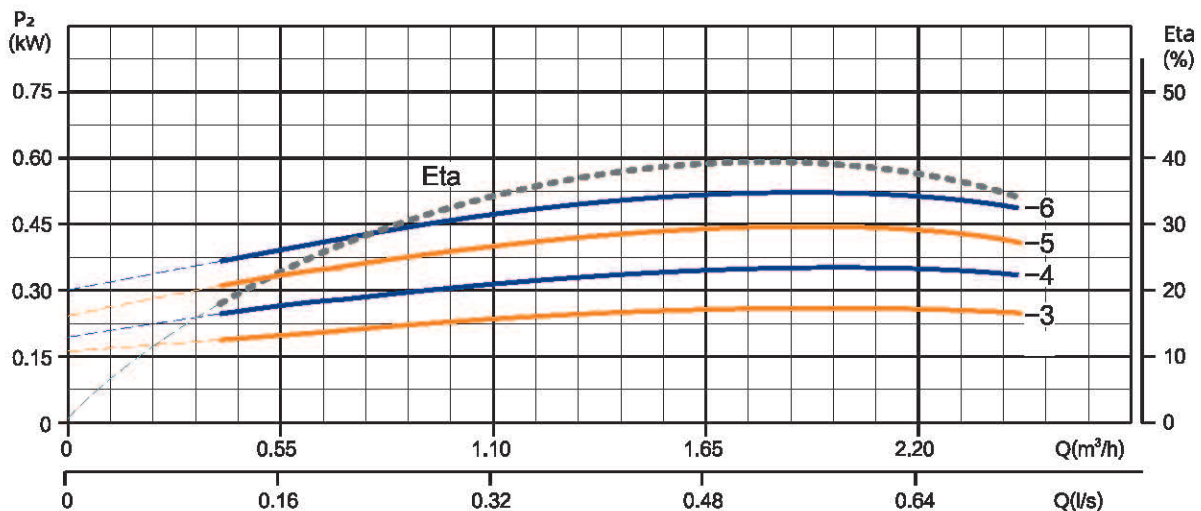
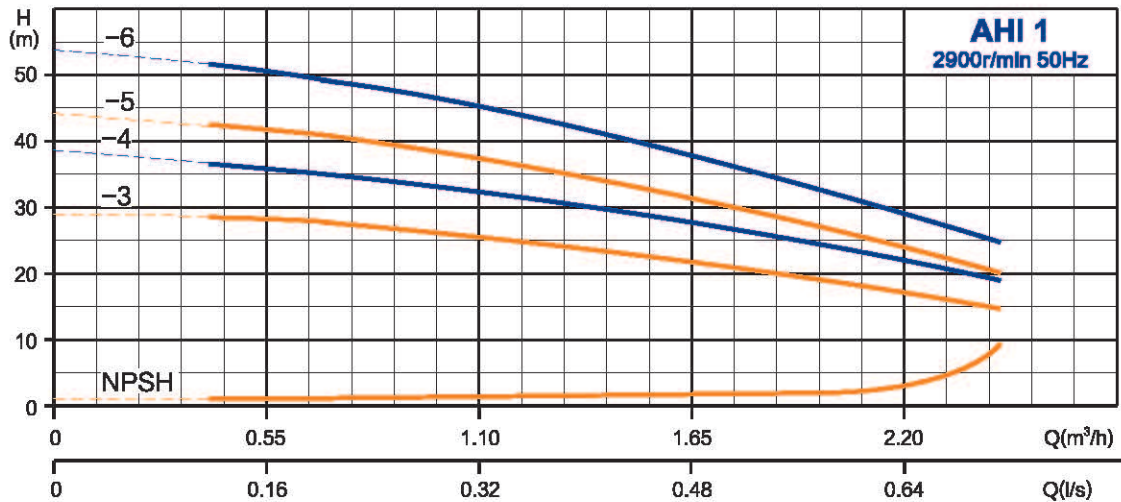
- ⊙ Protection class: IP55
- ⊙ Insulation class: F
- ⊙ Working method: S1
- ⊙ Voltage level: 220V/50Hz, 380V/50Hz

Performance Curve



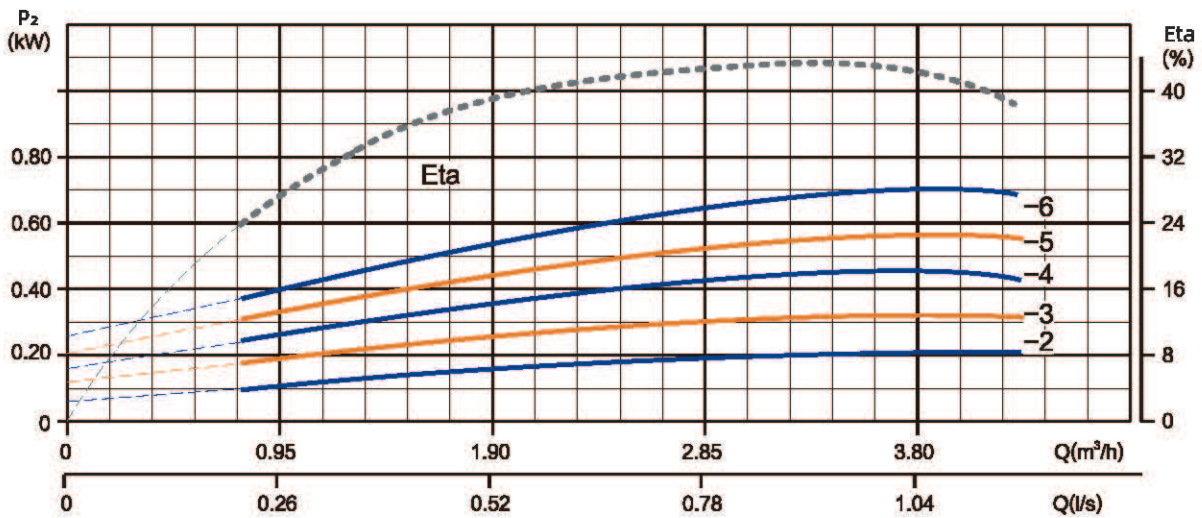
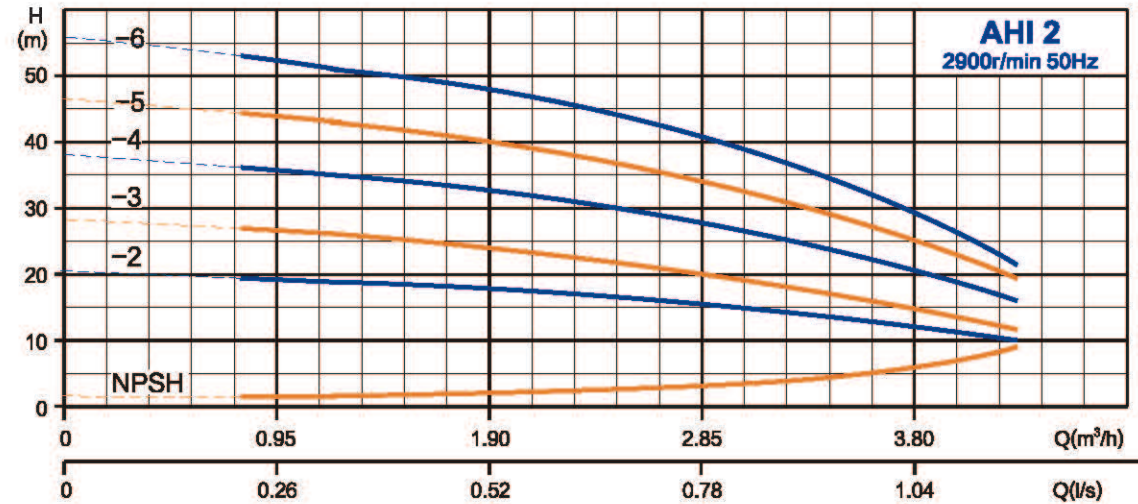
Model	Rated flow (m³/h)	Flow range (m³/h)	Maximum pressure (bar)	Motor power (kW)	Maximum efficiency (%)	Temperature range (°C)	Inlet	Outlet
AHI 1	1	0.4-2.4	5.1	0.25-0.37	28	0°C ~ +68°C	G1	G1
AHI 2	2	0.8-4	5.6	0.25-0.75	39		G1	G1
AHI 3	3	0.8-4	5.6	0.25-0.75	49		G1	G1
AHI 4	4	1-6	5.6	0.37-1.3	52		G1 1/4	G1
AHI 5	5	1-6	5.6	0.37-1.3	56		G1 1/4	G1
AHI 10	10	5-14	10	0.55-1.8	68		G1 1/2	G1 1/2
AHI 15	15	8-24	10	0.75-3	66		G2	G2
AHI 20	20	10-29	10	1.1-4	68		G2	G2

AHI 1 Performance Curve



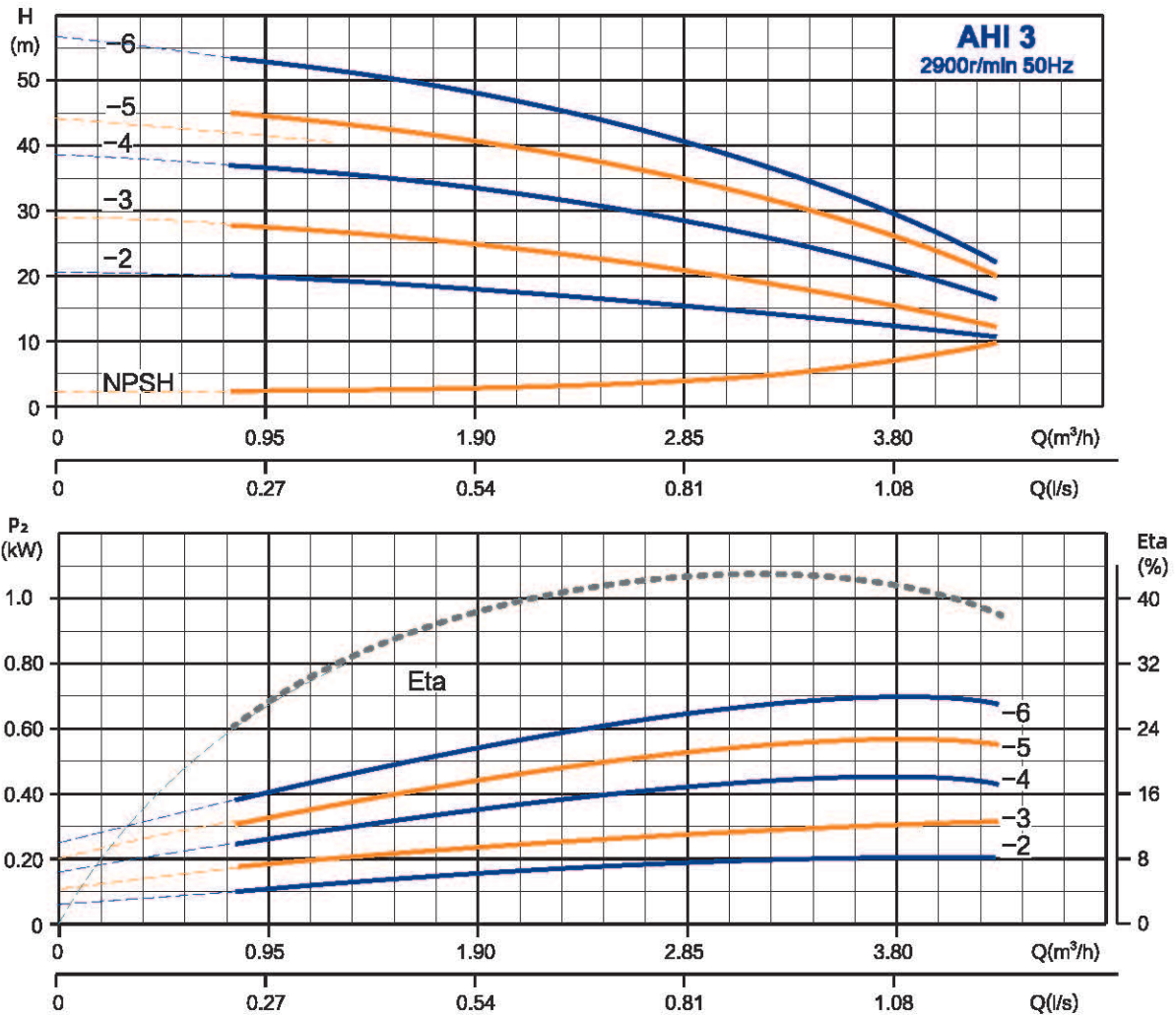
Model	Power	Q (m³/h)	0.4	0.6	0.8	1.0	1.2	1.4	1.6	1.8	2.0	2.2	2.4
AHI 1-3	0.25	H(m)	29	28.5	26	25	24.5	23.5	22	21	19	17	16
AHI 1-4	0.37		37	36	35	33	32	30	28	27	26	22	20
AHI 1-5	0.37		43	42	41	38	36	34	32	29	27	25	22
AHI 1-6	0.37		51	50	49	46	44	42	40	36	32	30	26

AHI 2 Performance Curve



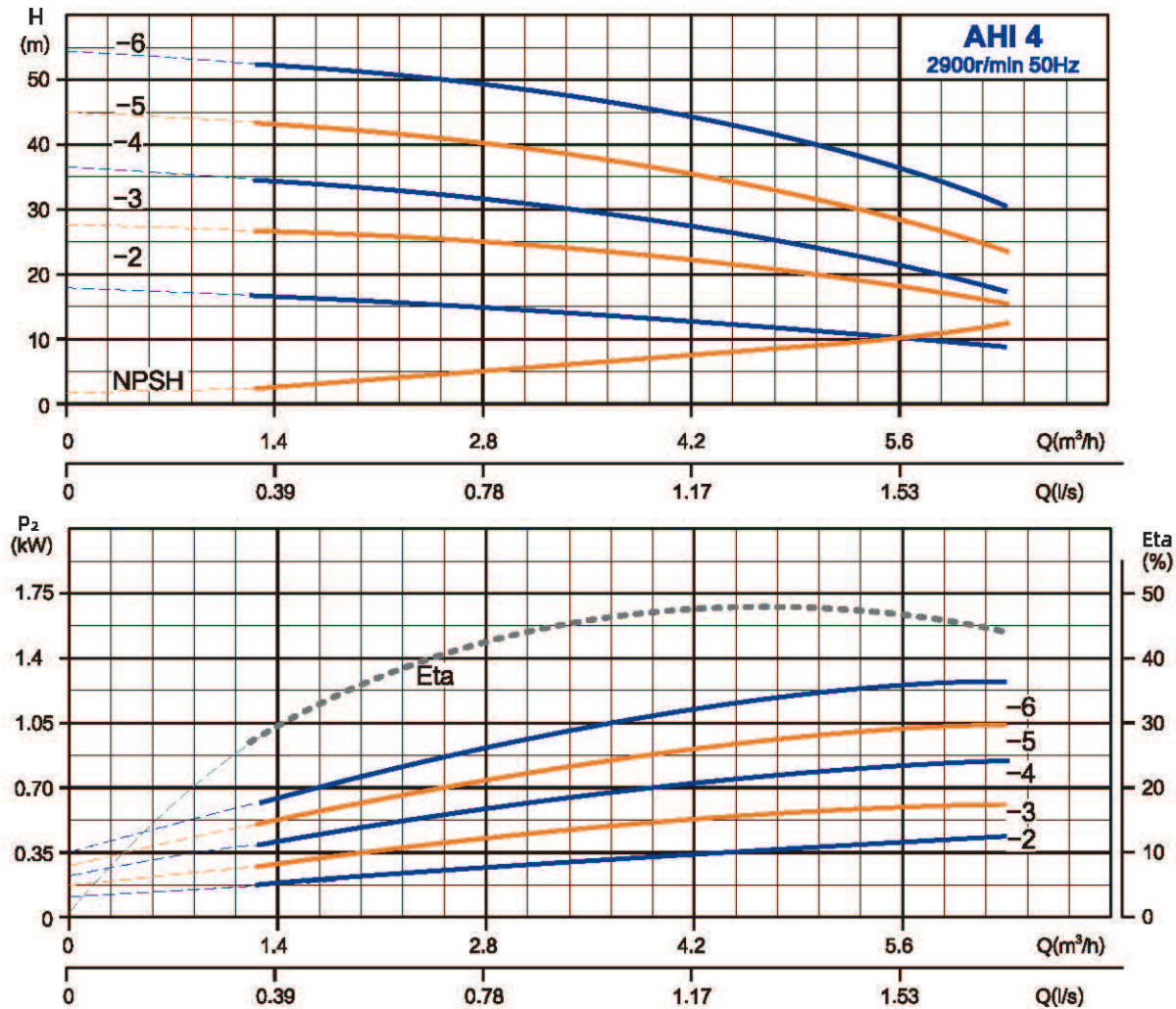
Model	Power	Q (m³/h)	0.8	1.2	1.6	2.0	2.4	2.8	3.2	3.6	4.0
AHI 2-2	0.25	H(m)	18.5	17.5	17	16	15	14	12	11	9.5
AHI 2-3	0.37		26	25	24	23	22	21	19	16	14
AHI 2-4	0.55		35	34	33	31	30	28	26	22	19
AHI 2-5	0.55		43	42	41	39	37	35	32	27.5	23
AHI 2-6	0.75		52	50.5	47	46	44	40	35	30.5	26

AHI 3 Performance Curve



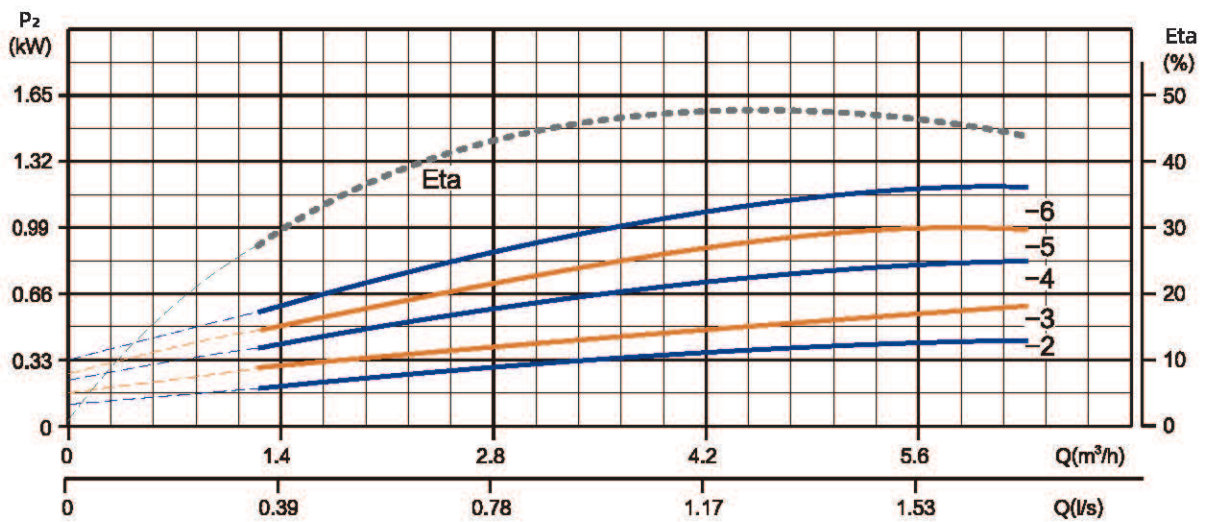
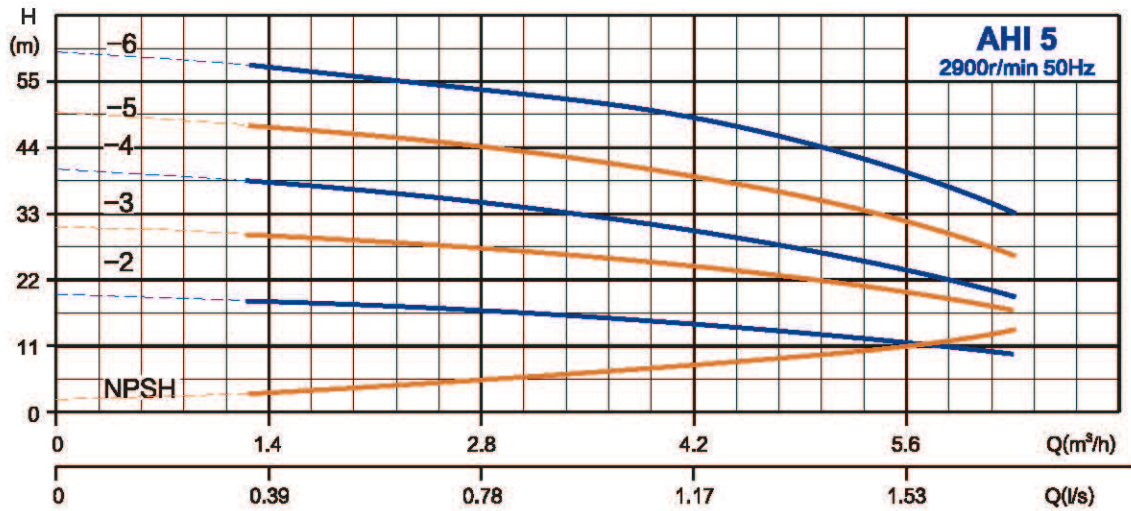
Model	Power	Q (m³/h)	0.8	1.2	1.6	2.0	2.4	2.8	3.0	3.2	3.6	4.0
AHI 3-2	0.25	H(m)	18.5	17.5	17	16	15	14	13	12	11	9.5
AHI 3-3	0.37		26	25	24	23	22	21	20	19	16	14
AHI 3-4	0.55		35	34	33	31	30	28	27	26	22	19
AHI 3-5	0.55		43	42	41	39	37	35	33	32	27.5	23
AHI 3-6	0.75		52	50.5	47	46	44	40	37	35	30.5	26

AHI 4 Performance Curve



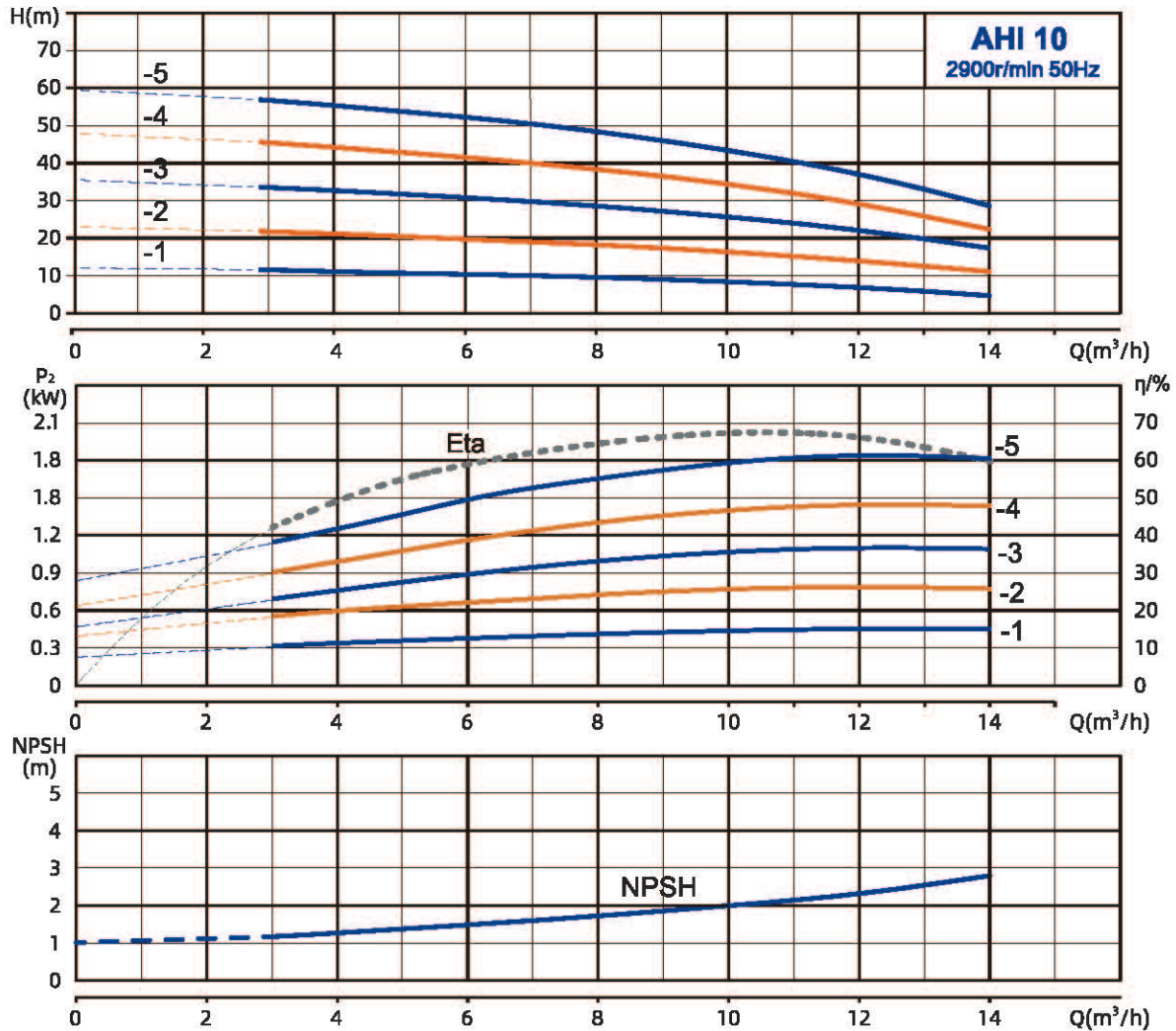
Model	Power	Q (m³/h)	1.0	1.5	2.0	2.5	3.0	3.5	4.0	4.5	5.0	5.5	6.0
AHI 4-2	0.37	H(m)	18.5	18	17.5	17	16	15.5	15	13.5	13	11	10
AHI 4-3	0.55		29	28.5	28	27	26.5	25.5	25	23	22	20	18
AHI 4-4	0.75		38	37	36	34	33.5	32	30	28	27	24	20
AHI 4-5	1.0		47	46	45	44	42.5	41	40	36	35	32	27
AHI 4-6	1.3		56.5	55	54	53	52.5	51	49	45	44	42	36

AHI 5 Performance Curve



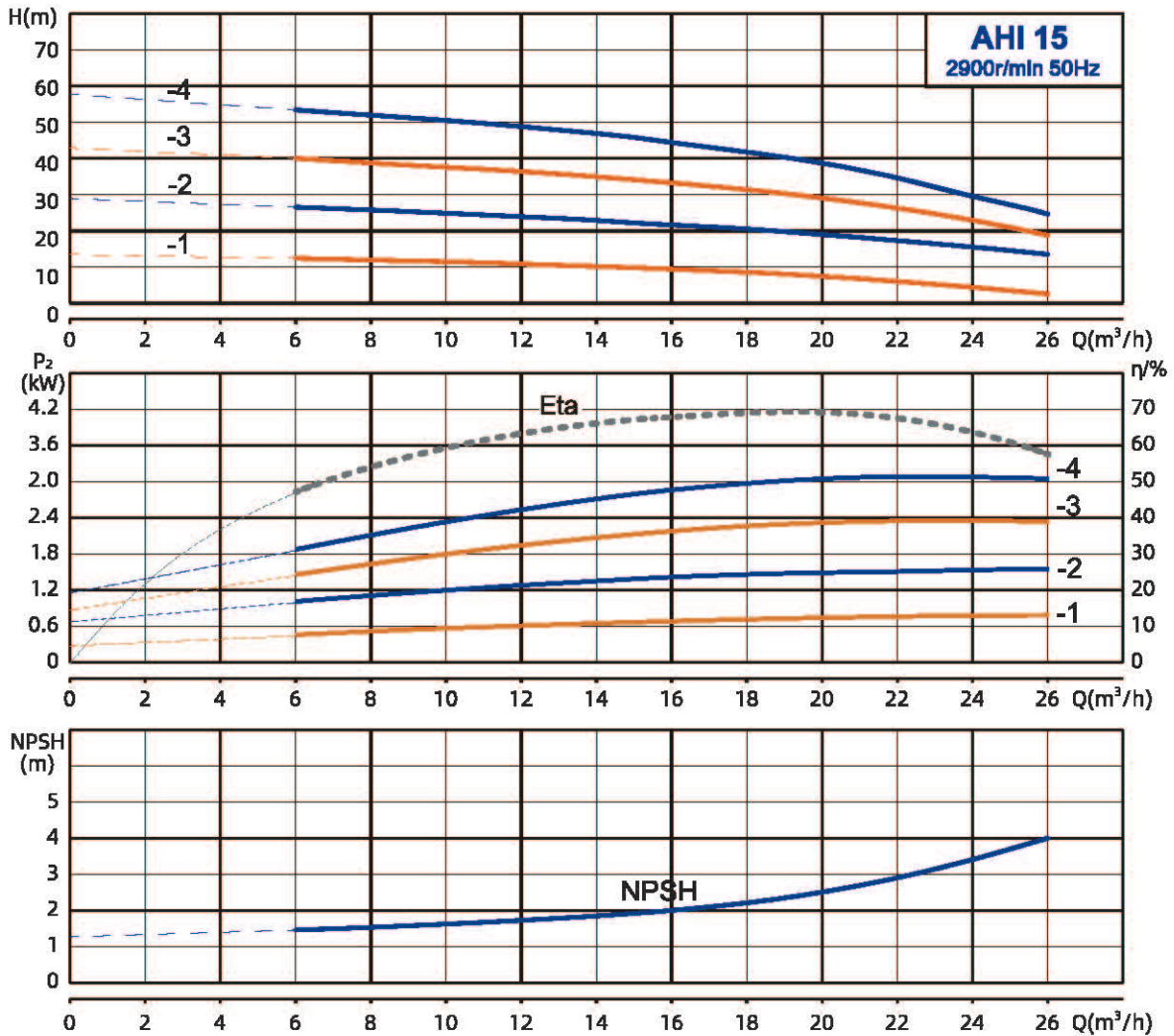
Model	Power	Q (m³/h)	1.0	1.5	2.0	2.5	3.0	3.5	4.0	4.5	5.0	5.5	6.0
AHI 5-2	0.37	H(m)	18.5	18	17.5	17	16	15.5	15	13.5	13	11	10
AHI 5-3	0.55		29	28.5	28	27	26.5	25.5	25	23	22	20	18
AHI 5-4	0.75		38	37	36	34	33.5	32	30	28	27	24	20
AHI 5-5	1.0		47	46	45	44	42.5	41	40	36	35	32	27
AHI 5-6	1.3		56.5	55	54	53	52.5	51	49	45	44	42	36

AHI 10 Performance Curve



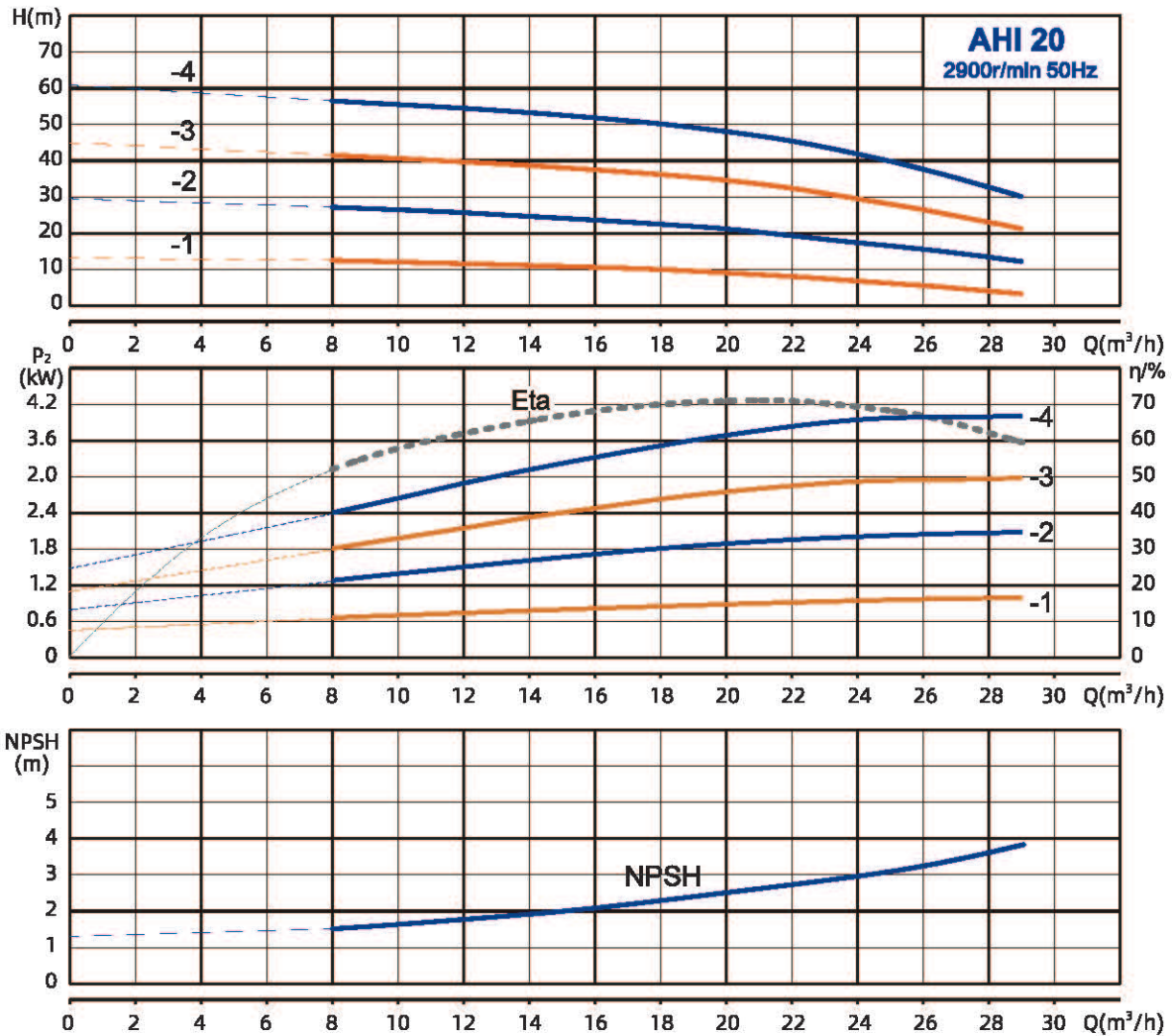
Model	Power	Q (m³/h)	0	5	6	8	10	12	14
AHI 10-1	0.55	H(m)	12	11	10.5	9.5	8	7	4.5
AHI 10-2	0.75		23	20.5	19.5	18	16.5	14	11
AHI 10-3	1.1		34.5	32	31	28.5	25.5	22	17.5
AHI 10-4	1.5		48	43	41.5	38	34	29	22.5
AHI 10-5	1.8		59.5	53.5	52	48.5	43	37.3	28.5

AHI 15 Performance Curve



Model	Power	Q (m^3/h)	0	6	8	10	12	15	18	20	22	24	26
AHI 15-1	0.75	H(m)	13.5	12.5	12	11.5	10.8	10	8.5	7.5	6	4.5	3
AHI 15-2	1.8		29	26.5	25.8	24.8	24	22.5	20.5	18.7	16.8	15.4	14
AHI 15-3	2.2		43	40	38.5	37.5	36.5	34	31.4	29	26.4	23	19.5
AHI 15-4	3		57.5	53.3	51.5	50.5	48.5	46	42	38	34.5	29.3	24.5

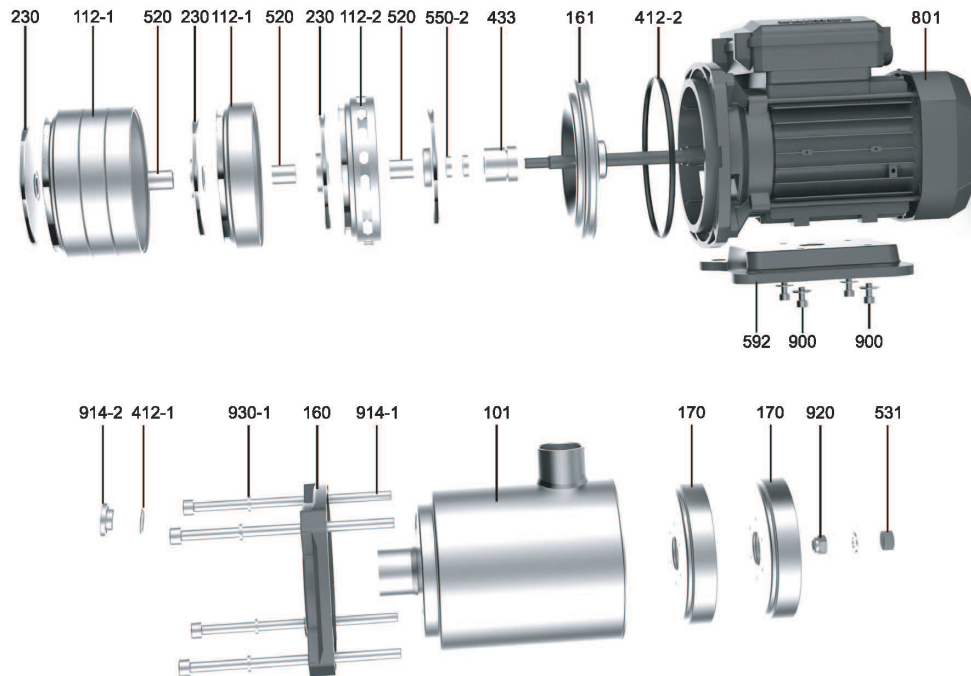
AHI 20 Performance Curve



Model	Power	Q (m³/h)	0	10	12	14	16	18	20	22	24	26	29
AHI 20-1	1.1	H(m)	13.5	12	11.5	11.1	10.5	10	9.5	8	6.8	5.5	3.2
AHI 20-2	2.2		30	27	26	25	25.5	24	23	20.3	18.5	18	13
AHI 20-3	3		45	40.5	39.5	38.5	37.5	36.2	35	32.4	29.3	26.3	21
AHI 20-4	4		60.5	55.5	54.5	53.2	51.8	50	47	45.2	42	37.3	30

Components

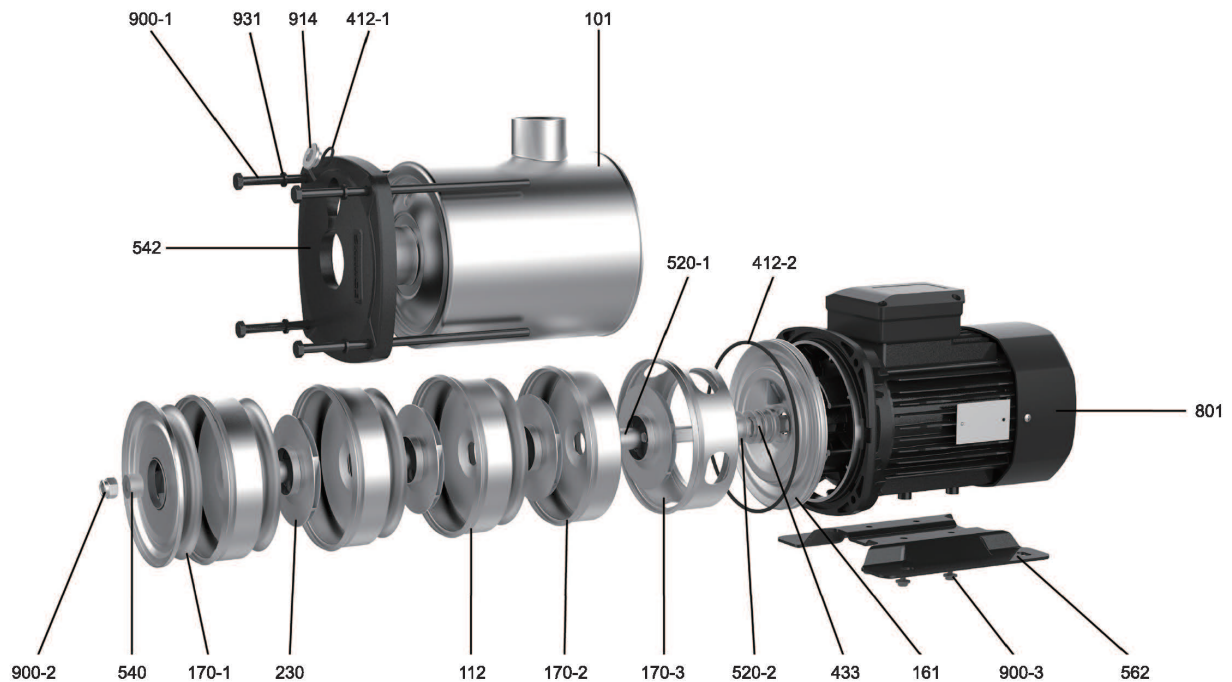
AHI 1/2/3/4/5



No.	Component	No.	Component
101	Pressure cylinder	520	Oblong sleeve
112-1	Chamber	531	Bushing
112-2	Outlet chamber	550-2	Adjusting washer
160	Platen	592	Base plate
161	COVER AS-FRONT	801	Electric machinery
170	Inlet chamber	900	Hexagon flange bolt
230	Impeller	914-1	Hexagon socket head cap screw
412-1	O-ring	914-2	Hexagon socket plug
412-2	O-ring	920	Non-metallic insert hex lock nut
433	Shaft seal	930-1	Standard spring washer

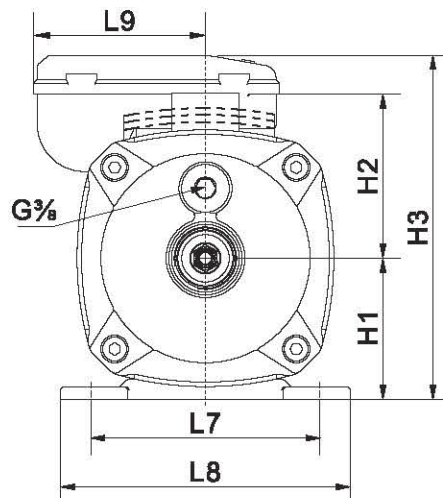
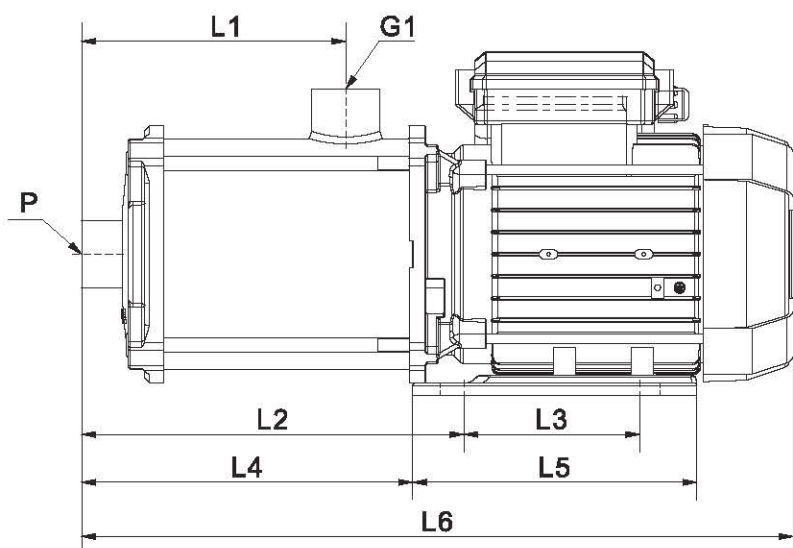
Components

AHI 10/15/20



No.	Component	No.	Component
101	Pressure Cylinder	520-4	Locking Shaft Sleeve
112-2	Guide Vane	540	Liner
161-2	Front Cover Assembly	542	Pressure Plate
170	Inlet Guide Vane	562	Base
171	Outlet Guide Vane	801	Motor
170-3	Outlet Guide Vane	900	Hexagonal Head Bolt
230	Impeller	900-1	1 Type I Non-metallic Fitting Locking Nut
412-2	O-ring Seal $\phi 160 \times 3.55$	900-3	Hexagonal Flange Face Bolt M5x10
412-1	O-ring Seal $\phi 12.5 \times 2.65$	914	Hexagon Plug
433	Mechanical Seal	931	Double Spring Self-locking Washer
520	Long Oval Bushing		

Packing Sizes & Weight



Model	L1 (mm)	L2 (mm)	L3 (mm)	L4 (mm)	L5 (mm)	L6 (mm)	L7 (mm)	L8 (mm)	L9 (mm)	H1 (mm)	H2 (mm)	H3(mm)		P	Weight (kg)	
												Single-phase	Three phase		Single-phase	Three phase
AHI 1-3	72	131	96	115	136	305	125	158	93.5	75	90	174	174	G1	6.5	6.5
AHI 1-4	90	149	96	133	136	323	125	158	93.5	75	90	174	174	G1	7.5	7
AHI 1-5	108	167	96	151	136	341	125	158	93.5	75	90	174	174	G1	8	8
AHI 1-6	144	203	96	187	136	377	125	158	93.5	75	90	174	174	G1	8	8.5

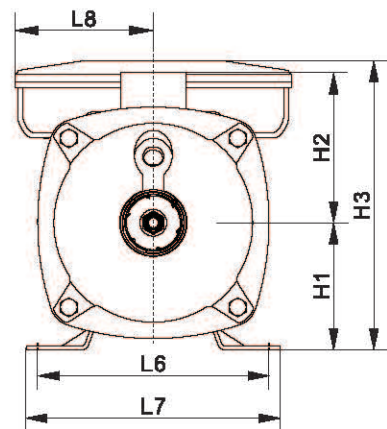
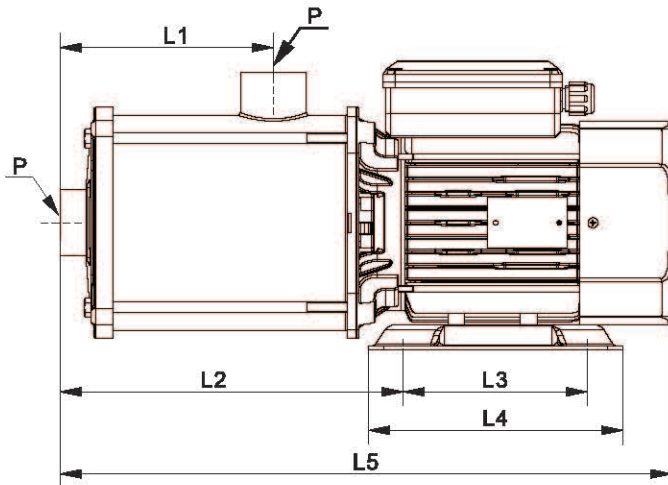
Model	L1 (mm)	L2 (mm)	L3 (mm)	L4 (mm)	L5 (mm)	L6 (mm)	L7 (mm)	L8 (mm)	L9 (mm)	H1 (mm)	H2 (mm)	H3(mm)		P	Weight (kg)	
												Single-phase	Three phase		Single-phase	Three phase
AHI 2-2	72	131	96	115	136	305	125	158	93.5	75	90	174	174	G1	6.5	6
AHI 2-3	72	131	96	115	136	305	125	158	93.5	75	90	174	174	G1	7	7
AHI 2-4	90	154	96	126	155	334	125	158	93.5	75	90	197	188	G1	9	9.5
AHI 2-5	108	172	96	144	155	352	125	158	93.5	75	90	197	188	G1	9.5	9.5
AHI 2-6	144	208	96	180	155	388	125	158	93.5	75	90	197	188	G1	11.5	11.5

Model	L1 (mm)	L2 (mm)	L3 (mm)	L4 (mm)	L5 (mm)	L6 (mm)	L7 (mm)	L8 (mm)	L9 (mm)	H1 (mm)	H2 (mm)	H3(mm)		P	Weight (kg)	
												Single-phase	Three phase		Single-phase	Three phase
AHI 3-2	72	131	96	115	136	305	125	158	93.5	75	90	174	174	G1	6.5	6.5
AHI 3-3	72	131	96	115	136	305	125	158	93.5	75	90	174	174	G1	7	7
AHI 3-4	90	154	96	126	155	334	125	158	93.5	75	90	197	188	G1	9	9.5
AHI 3-5	108	172	96	144	155	352	125	158	93.5	75	90	197	188	G1	9.5	9.5
AHI 3-6	144	208	96	180	155	388	125	158	93.5	75	90	197	188	G1	11	11

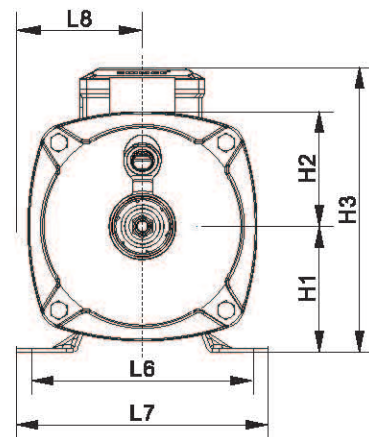
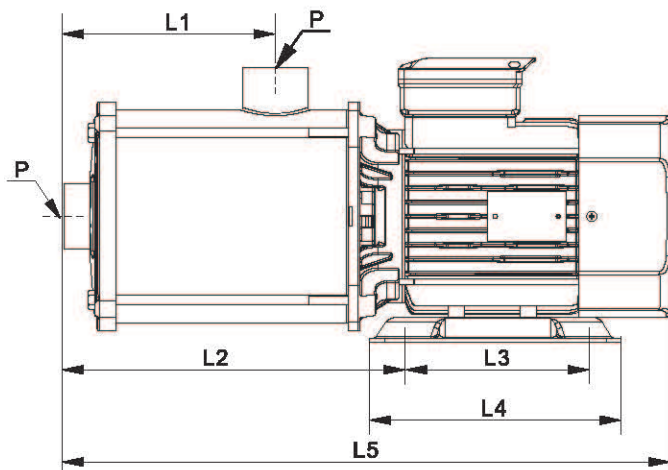
Model	L1 (mm)	L2 (mm)	L3 (mm)	L4 (mm)	L5 (mm)	L6 (mm)	L7 (mm)	L8 (mm)	L9 (mm)	H1 (mm)	H2 (mm)	H3(mm)		P	Weight (kg)	
												Single-phase	Three phase		Single-phase	Three phase
AHI 4-2	72	131	96	115	136	305	125	158	93.5	75	90	174	174	G11/4	7	6.5
AHI 4-3	72	136	96	108	155	316	125	158	93.5	75	90	197	188	G11/4	9	9
AHI 4-4	90	154	96	126	155	334	125	158	93.5	75	90	197	188	G11/4	10	10.5
AHI 4-5	108	207	125	179	175	396	140	178	102	90	90	238	215	G1 1/4	13	12.5
AHI 4-6	144	243	125	215	175	432	140	178	102	90	90	238	215	G11/4	15	14.5

Model	L1 (mm)	L2 (mm)	L3 (mm)	L4 (mm)	L5 (mm)	L6 (mm)	L7 (mm)	L8 (mm)	L9 (mm)	H1 (mm)	H2 (mm)	H3(mm)		P	Weight (kg)	
												Single-phase	Three phase		Single-phase	Three phase
AHI 5-2	72	131	96	115	136	305	125	158	93.5	75	90	174	174	G11/4	6.5	7
AHI 5-3	72	136	96	108	155	316	125	158	93.5	75	90	197	188	G1 1/4	9	9
AHI 5-4	90	154	96	126	155	334	125	158	93.5	75	90	197	188	G11/4	10.5	10.5
AHI 5-5	108	207	125	179	175	396	140	178	102	90	90	238	215	G11/4	12.5	12.5
AHI 5-6	144	243	125	215	175	432	140	178	102	90	90	238	215	G11/4	15.5	14.5

Packing Sizes & Weight



Single Phase



Three Phase

Model	L1 (mm)	L2 (mm)		L3 (mm)	L4 (mm)	L5 (mm)	L6 (mm)	L7 (mm)	L8 (mm)		H1 (mm)	H2 (mm)	H3(mm)		P	Weight (kg)
		Single-phase	Three phase						Single-phase	Three phase			Single-phase	Three phase		
AHI10-1	78	169	169	96	140	356	125	158	109	91	100	118	218	218	G1½	12
AHI10-2	78	169	169	96	140	356	125	158	109	91	100	118	218	218	G1½	14
AHI10-3	108	217	217	140	200	418	125	158	109	100	100	118	227	226	G1½	15.5
AHI10-4	138	249	264	140	200	448	160	200	109	100	100	118	227	226	G1½	18.5
AHI10-5	168	281	281	140	200	478	160	200	109	100	100	118	227	226	G1½	25/ 21

Model	L1 (mm)	L2 (mm)		L3 (mm)	L4 (mm)	L5 (mm)	L6 (mm)	L7 (mm)	L8 (mm)		H1 (mm)	H2 (mm)	H3(mm)		P	Weight (kg)
		Single-phase	Three phase						Single-phase	Three phase			Single-phase	Three phase		
AHI15-1	93	190	190	96	140	377	125	158	109	91	100	118	218	218	G2	13.5/13
AHI15-2	93	206	206	140	200	407	160	200	109	100	100	118	227	226	G2	18
AHI15-3	138	/	248	140	180	483	160	200	/	100	100	118	/	239	G2	23
AHI15-4	298	/	304	140	180	572	190	230	/	100	112	118	/	261	G2	28

Model	L1 (mm)	L2 (mm)		L3 (mm)	L4 (mm)	L5 (mm)	L6 (mm)	L7 (mm)	L8 (mm)		H1 (mm)	H2 (mm)	H3(mm)		P	Weight (kg)
		Single-phase	Three phase						Single-phase	Three phase			Single-phase	Three phase		
AHI20-1	93	206	207	96	140	407	125	158	109	100	100	118	227	226	G2	15
AHI20-2	93	200	200	140	200	438	160	200	/	100	100	118	/	226	G2	22
AHI20-3	138	/	254	140	180	527	190	230	/	100	112	118	/	261	G2	28
AHI20-4	298	/	288	140	180	572	190	230	/	100	112	118	/	261	G2	32